

# Human Genetics

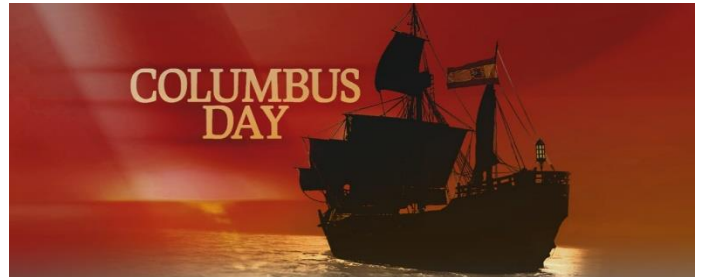
Plan of the Week: #8

Continue to check your progress on Schoology, PowerSchool and Wardisiani.com

**DEADLINE FOR SUBMISSIONS IS FRIDAY 10/15 @ 4PM**

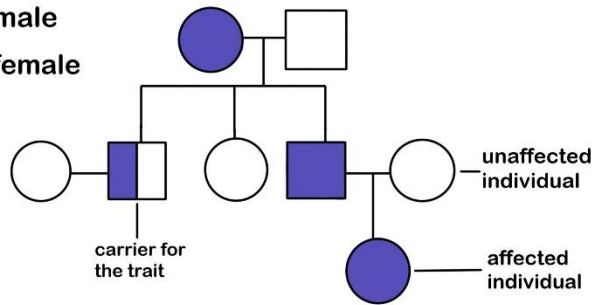
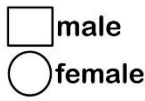
## 10/11 Monday:

- **Columbus Day:** No Class Today



## 10/12 Tuesday:

- **Small Groups**
- **Acrocephalosyndactyly** Case (p. 7)
- **Carnosinemia** (p.8)



## 10/13 Wednesday:

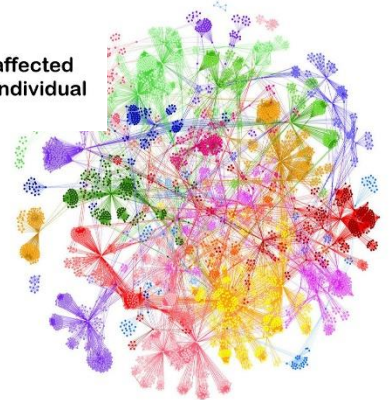
- **Small Groups**
- **Mon-Hybrid Crosses**
- **Dihybrid Crosses**
- **Pedigrees**

## 10/14 Thursday:

- **Human Genetics:** Common Interim Assessment

## 10/15 Friday:

- **In-Class:** Work Day
- **Q/A Session**



## Objectives for Week #8

- Pedigrees and Punnett squares are tools that apply Mendel's first law to predict the recurrence risks of inherited disorders or traits
- A cell contains many mitochondria, which have many copies of the mitochondrial genome; mitochondrial genes are maternally inherited and mutate rapidly
- Mendel's first law can be used to solve problems involving X-linked genes
- Genes and environmental factors frame most traits
- Heritability measures the genetic contribution to a multifactorial trait; it is specific to a particular population at a particular time
- Population that suddenly become sedentary and switch to fatty diet reflect environmental influence on the body
- The genes products responsible for variation in behaviors
- Most behavioral traits and disorders are common, polygenic and multifactorial

